

**ADB Project No: 41122-043**  
**ADB Loan/Grant No: 2560-GEO, 2843-GEO**  
**Financed by: The Asian Development Bank**

**Project:**  
**Kobuleti Bypass Road Section**  
**KM12+400-KM31+259**



**Post Construction Environmental Site Observation report**  
**(Supplement of the Final EMR)**

**September 2021**

This report represents the Post Construction Environmental Site Observation for ADB Loan/Grant No: 2560-GEO, 2843-GEO: Construction of Kobuleti Bypass Road Section KM12+400-KM31+259.

The post-construction environmental Site Observation was conducted on September 4-5, 2021 by the Luiza Bubashvili Environmental Safeguard Consultant under ADB financed Projects.

During the audit, the entire project road was inspected. Particular attention was paid to the areas where, during the construction phase, the most non-compliances were observed during the environmental post-construction audits conducted by the Ltd „Dohwa” in September, 2020.

Visits were made to the following facilities and sections: (i) Choloki Construction Camp; (ii) Ochkhamuri Construction Camp; (iii) Laituri Construction Camp; (iv) Bobokvati Construction Camp; (v) Chakvi Construction Camp, (vi) along the project road; (vii) Areas adjacent to No. 9, 10 and 11 bridges, and also (viii) Shuaghele sand quarry (near the river Dekhva).

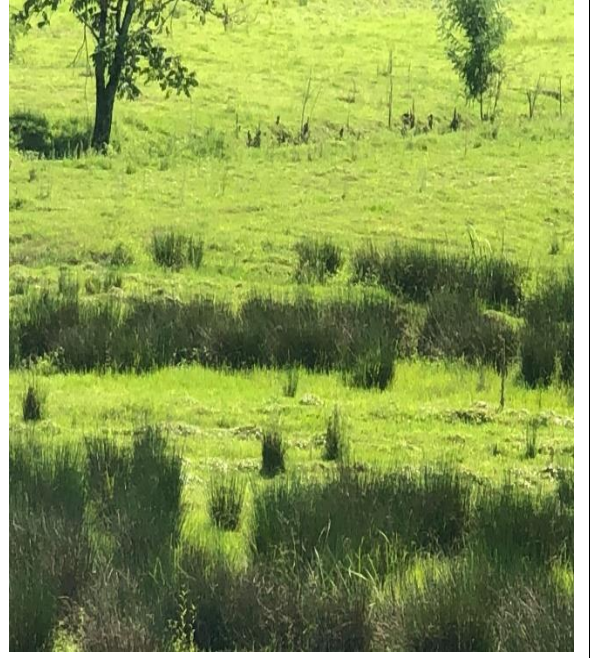
At the time of the site visit conducted on 4-5 September 2021 by Liza Bubashvili (RD Environmental Consultant), all non-compliances observed during the post-construction environmental audit conducted by CSC (Ltd „Dohwa”) in September 2020 have been properly addressed and corrected, namely:

1. All construction and household waste is removed from the project area (see **Figures 1 and 2**);
2. All construction camps have been dismantled and the existing infrastructure units removed from the camp area (see **Figures 1 and 2**);
3. Construction waste is completely removed from the areas adjacent to the bridges (See **Figures 9 and 10**);
4. On the slopes along the project road, as well as at the Shuagele quarry site, where additional topsoil was used and seeding/planting implemented (see **Figures 5,6,7,8**).

**Figure 1. Ochkhauri camp area**



**Figure 2. Ochkhauri camp area**



**Figure 3. Shuagele Quarry Site**



**Figure . Shuagele Quarry Site**



**Figure 5. Slopes reinstatement**



**Figure 6. Slopes reinstatement**



**Figure 7. Slopes reinstatement**



**Figure 8. Slopes reinstatement**



**Figure 9. Bridge area**



**Figure 10. Bridge area**

